



Solutions for a Cleaner Environment



## CL006 TECHNICAL DATA SHEET

### CLAIRE BED BUG, LICE AND DUST MITE SPRAY

#### PRODUCT DESCRIPTION:

- Odorless
- Kills Bed Bugs
- For use on clothing, wool and other proteinaceous fibers
- Will not stain water-safe fabrics and surfaces
- One clothing treatment lasts 2 weeks
- Controls listed pests
- Kills adult lice, and nymphs as they hatch, on mattresses, garments, furniture and other inanimate objects
- Kills dust mites through contact
- Kills and repels mosquitoes and ticks
- Controls ticks that transmit Lyme Disease
- For use on premises to control fleas and ticks
- Controls pests up to 4 weeks
- Kills lice and their eggs on mattresses, furniture, car interior and other non-washable items
- Kills house dust mites (*Dermatophagoides* spp.) for up to 8 weeks in carpets, curtains and on upholstery
- Controls house dust mites that may cause asthma, rhinitis, watery eyes and sneezing

#### AREAS OF USE:

Non-food areas such as garbage rooms, lavatories, entries, vestibules, offices, locker rooms, machine rooms, boiler rooms, garages, mop closets and storage areas (after bottling or canning).

#### SPECS:

Can Size: 20 oz.  
Net Weight: 16 oz.  
Shipping Weight: 12.996 lbs.  
Packaged: 12 cans per case  
UPC Number: 7 13014 11006 0  
GTIN Number: 10713014060065  
Material Number: 1000001197  
Product Number: CL006  
Extender Tube: N

#### REGULATORY:

EPA Reg. No.: 706-110  
Recyclable Package: Yes  
VOC Compliant CARB: Yes  
VOC Compliant OTC: Yes

#### PHYSICAL CHARACTERISTICS:

Appearance: Thin, white emulsion  
Fragrance: Odorless  
Shelf Life: 1 year +

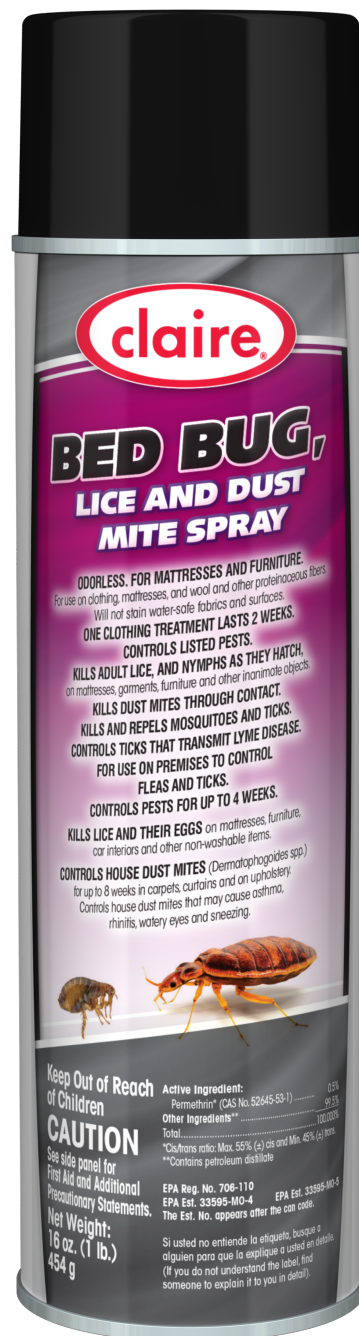
See label side panel for First Aid and additional Precautionary Statements

**24 HOUR MEDICAL EMERGENCY NUMBER:**

**1-866-836-8855**

**KEEP OUT OF REACH OF CHILDREN  
CONSULT SDS BEFORE USING**

MADE IN THE  
**USA**  
WITH GLOBALLY  
SOURCED  
MATERIALS



Ver. 2022-08-22



[www.alco-chem.com](http://www.alco-chem.com)

North: 45 N. Summit St. | Akron, OH 44308 | P: 330.253.3535 | 1.800.589.ALCO | F: 330.253.9219  
South: 1303 Park Ave. SW | Canton, OH 44706 | P: 330.833.8551 | 1.800.437.5248 | F: 330.833.0011